

How to Apply and Care

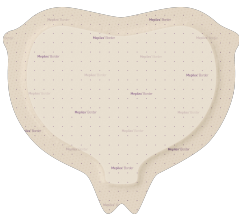
for the Mepilex® Border Sacrum dressing

Date: _____ Resident/Client Name: _____

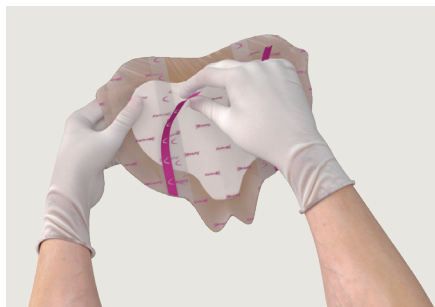
Pressure Injury Staging

Stage 1	<input type="checkbox"/>] → Apply Mepilex® Border Sacrum	<input type="checkbox"/>
Stage 2	<input type="checkbox"/>		

Stage 3	<input type="checkbox"/>] → Refer to your RN or CNC/CNS or the Pressure Injury Lead	<input type="checkbox"/>
Stage 4	<input type="checkbox"/>		
Unstageable	<input type="checkbox"/>		
Suspected Deep Tissue Injury	<input type="checkbox"/>		



How and where to apply the Mepilex® Border Sacrum dressing



1A. Carry out the wound cleansing procedure as per your facility's policy.

Consult with your RN or CNC/CNS or the Pressure Injury Lead regarding the wound cleansing procedure.

1B. After the skin is prepared and dried thoroughly, remove the centre release film by gently pulling on the purple-lined edge.



2. Hold the buttocks apart. Apply the dressing to the sacral area and into the upper aspect of the gluteal cleft, with the dressing 'base' positioned to cover the coccyx area (the bony prominence).

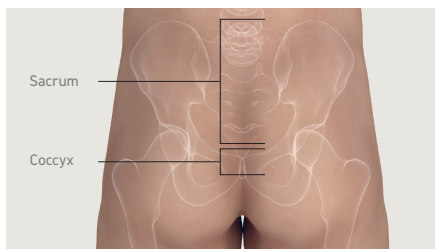


3. Remove the side release films and gently smooth each side into place. Do not stretch.

Frequency of Change

Can be left in place for up to seven days depending on the wound condition.

Change the dressing if rolled, soiled, 75% saturated, or displaced.



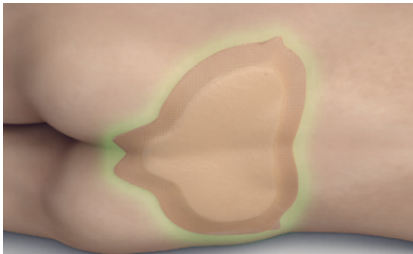
NOTE: Ensure the dressing does not cover the anus. Please consult with your RN or CNC/CNS or the Pressure Injury Lead for further instructions.

TIPS & TRICKS

Correct application is the key: ALWAYS ask for help - Two people are recommended when applying the dressing.

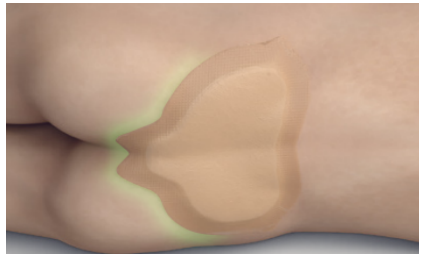
1. Do not apply the dressing too low towards the anus, the dressing must cover the coccyx at the junction of the dressing.
2. The borders must be smooth when applying, so go slow when removing the backing.
3. The skin must be dry, free from moisturiser etc. No skin prep under the dressing.
4. Upon application of the dressing, apply the skin prep over the border of the dressing and the skin to create a seal as shown in the image below.

TREATMENT



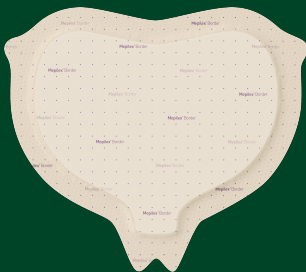
Apply the skin prep on the dressing border and the skin as per the image twice a day.

PREVENTION



Apply the skin prep on the bottom half of the dressing border and the skin as per the image twice a day.

Caution If you see any changes in the wound and/or the surrounding skin, such as redness, pain, swelling or odour, please contact your RN or CNC/CNS or the Pressure Injury Lead.



This is a single-use dressing.



This dressing is showerproof.
Ensure that the borders are smooth with no wrinkles prior to showering.

Please note: Do **NOT** allow the dressing to soak in water for extended periods of time.



Visit **Mölnlycke ANZ YouTube channel** or scan the QR on the left to view our product application guides.

You can find more resources about **wound management** here*
<https://woundaware.org/#factsheets>



These codes can be scanned by any QR Code Scanner app or your iPhone camera.

For further information, please contact your local Mölnlycke representative.

For Instructions for Use, please contact your healthcare professional.

*Disclaimer: All dressings mentioned should be handled and applied by healthcare professionals. If a healthcare professional is not available, a family member or yourself may need to do the dressing changes. Accordingly, if the mentioned dressing(s) is(are) not applied by a healthcare professional, the manufacturer does not take any responsibility or liability connected to the application of the dressings.

Reference: 1. Mepilex Border Sacrum Instructions for use. * Resources are supported by Wounds Australia.

Find out more at www.molnlycke.com.au | www.molnlycke.co.nz

You will be required to input the following code **1FtYrV** or your **AHPRA registration number** to access our websites.

Mölnlycke, 12 Narabang Way, Level 4, Belrose, NSW, 2085. Phone 1800 005 231. The Mölnlycke, Mepilex and Safetac trademarks, names and logos are registered globally to one or more of the Mölnlycke Health Care Group of Companies. © 2024 Mölnlycke Health Care. All rights reserved. AUWC_001478

